

District I  
1625 N. French Dr., Hobbs, NM 88240  
Phone: (575) 393-6161 Fax: (575) 393-0720  
District II  
811 S. First St., Artesia, NM 88210  
Phone: (505) 748-1283 Fax: (575) 748-9720  
District III  
1000 Rio Brazos Road, Aztec, NM 87410  
Phone: (505) 334-6178 Fax: (505) 334-6170  
District IV  
1220 S. St. Francis Dr., Santa Fe, NM 87505  
Phone: (505) 476-3460 Fax: (505) 476-3462

State of New Mexico  
Energy, Minerals & Natural Resources  
Department  
OIL CONSERVATION DIVISION  
1220 South St. Francis Dr.  
Santa Fe, NM 87505

FORM C-102  
Revised August 1, 2011  
Submit one copy to appropriate  
District Office

AMENDED REPORT

WELL LOCATION AND ACREAGE DEDICATION PLAT

<sup>1</sup> API Number <b>30-025-46976</b>		<sup>2</sup> Pool Code <b>33813</b>		<sup>3</sup> Pool Name <b>JAL; WOLFCAMP, WEST</b>	
<sup>4</sup> Property Code <b>327300</b>		<sup>5</sup> Property Name <b>BLACK MARLIN FED COM</b>			<sup>6</sup> Well Number <b>204H</b>
<sup>7</sup> OGRID No. <b>#372043</b>		<sup>8</sup> Operator Name <b>TAP ROCK OPERATING, LLC.</b>			<sup>9</sup> Elevation <b>3180'</b>

<sup>10</sup>Surface Location

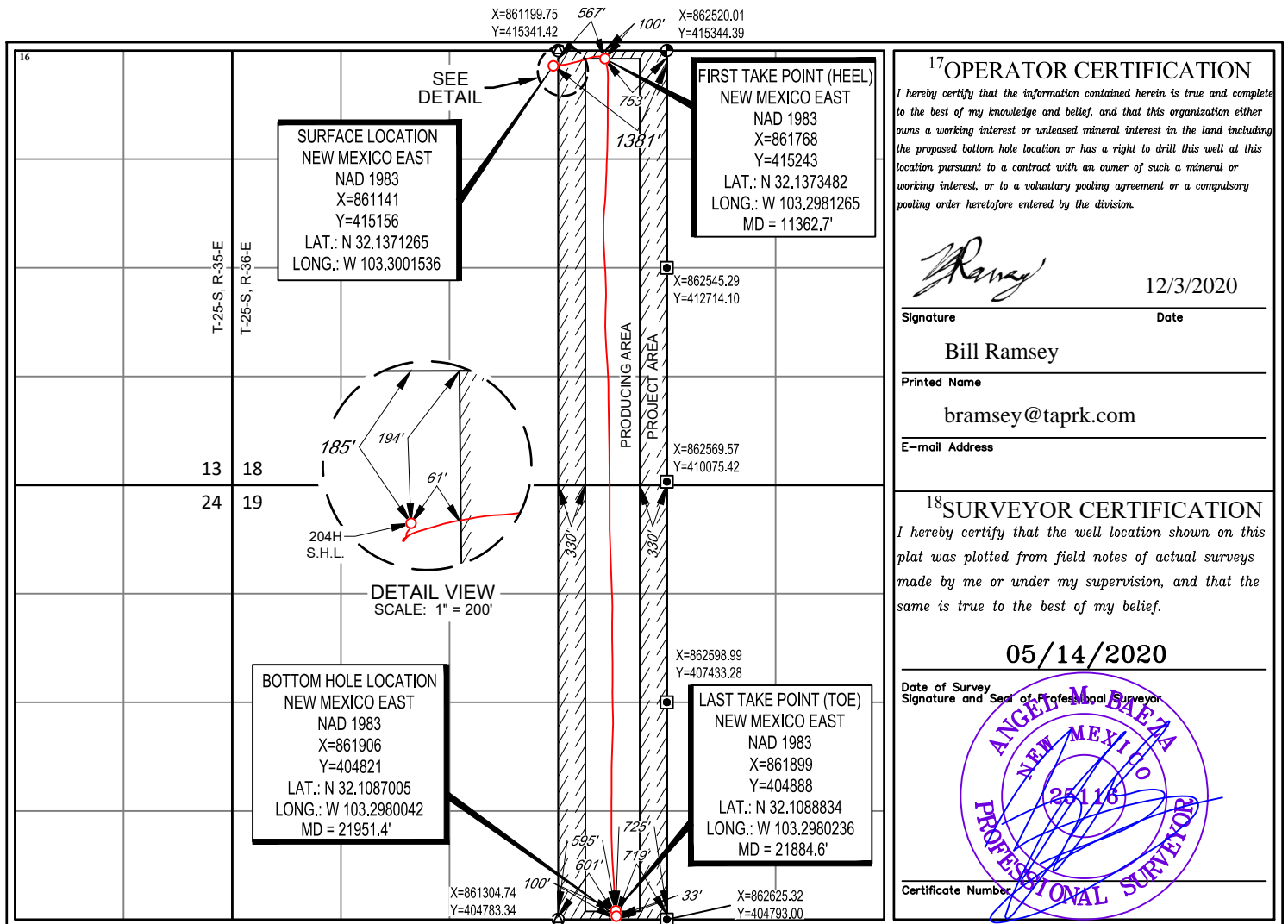
UL or lot no.	Section	Township	Range	Lot Idn	Feet from the	North/South line	Feet from the	East/West line	County
B	18	25-S	36-E	-	185'	NORTH	1381'	EAST	LEA

<sup>11</sup>Bottom Hole Location If Different From Surface

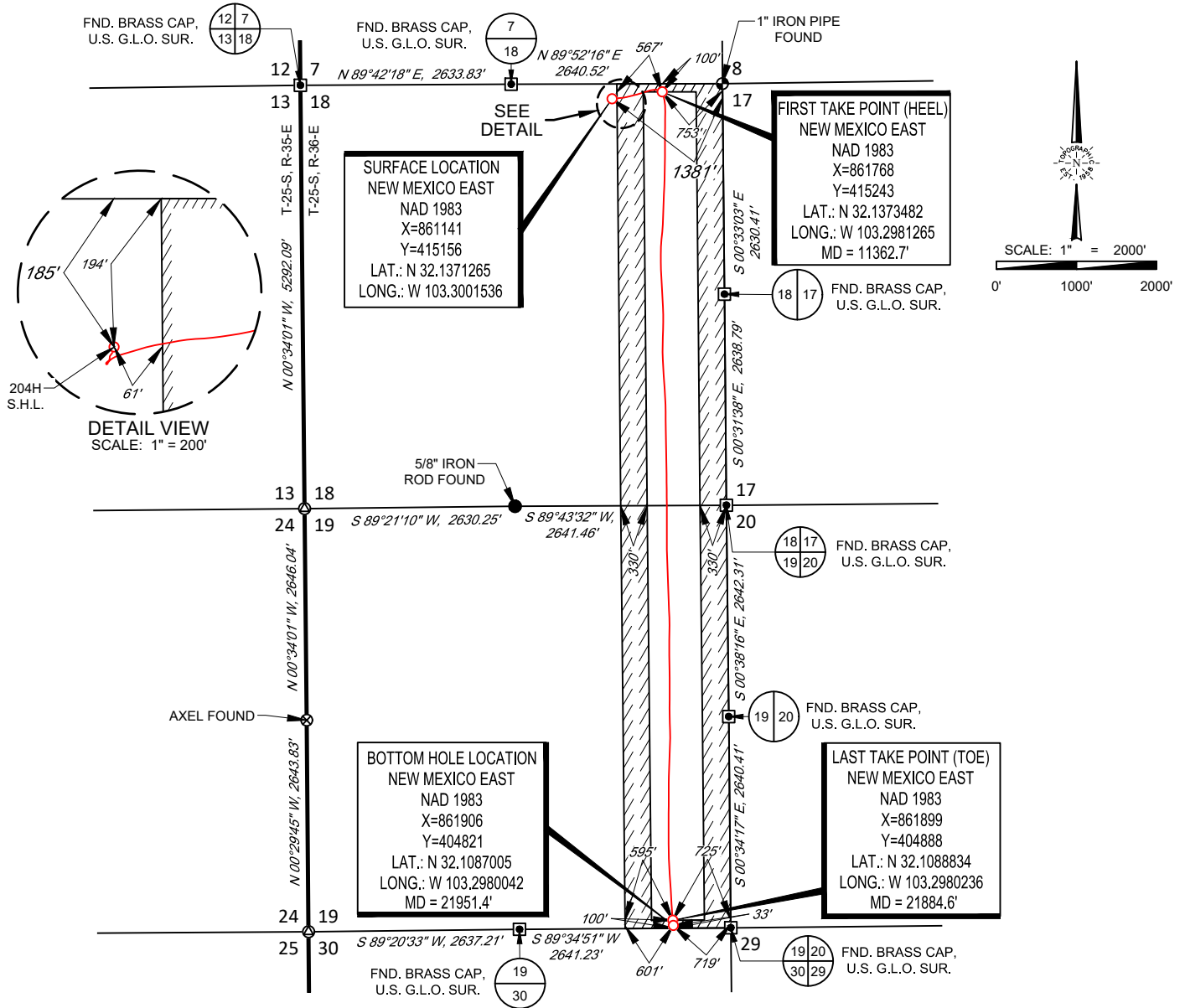
UL or lot no.	Section	Township	Range	Lot Idn	Feet from the	North/South line	Feet from the	East/West line	County
P	19	25-S	36-E	-	33'	SOUTH	719'	EAST	LEA

<sup>12</sup> Dedicated Acres <b>320.00</b>	<sup>13</sup> Joint or Infill	<sup>14</sup> Consolidation Code	<sup>15</sup> Order No.
--	-------------------------------	----------------------------------	-------------------------

No allowable will be assigned to this completion until all interests have been consolidated or a non-standard unit has been approved by the division.



SECTION 18, TOWNSHIP 25-S, RANGE 36-E, N.M.P.M.  
LEA COUNTY, NEW MEXICO



LEASE NAME & WELL NO.: BLACK MARLIN FED COM 204H  
 SECTION 18 TWP 25-S RGE 36-E SURVEY N.M.P.M.  
 COUNTY LEA STATE NM ELEVATION 3180'  
 DESCRIPTION 185' FNL & 1381' FEL

**INTERNAL  
PRE-COMPLETION  
PLAT**



1400 EVERMAN PARKWAY, Ste. 146 • FT. WORTH, TEXAS 76140  
 TELEPHONE: (817) 744-7512 • FAX (817) 744-7554  
 2903 NORTH BIG SPRING • MIDLAND, TEXAS 79705  
 TELEPHONE: (432) 682-1653 OR (800) 767-1653 • FAX (432) 682-1743  
 WWW.TOPOGRAPHIC.COM

BLACK MARLIN FED COM 204H PRE-COMPLETION	REVISION:	
	INT	DATE
DATE:	09/09/2020	
FILE:	C:\BLACK_MARLIN_FED_COM_204H	
DRAWN BY:	GJU	
SHEET:	1 OF 1	

NOTES:  
 1. ORIGINAL DOCUMENT SIZE: 8.5" X 11"  
 2. ALL BEARINGS, DISTANCES, AND COORDINATE VALUES CONTAINED HEREIN ARE GRID BASED UPON THE NEW MEXICO COORDINATE SYSTEM OF 1983, EAST ZONE, U.S. SURVEY FEET.  
 3. THIS WELL LOCATION SHOWN HEREON HAS BEEN SURVEYED ON THE GROUND UNDER MY SUPERVISION AND PREPARED ACCORDING TO THE EVIDENCE FOUND AT THE TIME OF SURVEY, AND DATA PROVIDED BY TAP ROCK OPERATING, LLC. THIS CERTIFICATION IS MADE AND LIMITED TO THOSE PERSONS OR ENTITIES SHOWN ON THE FACE OF THIS PLAT AND IS NON-TRANSFERABLE. THIS SURVEY IS CERTIFIED FOR THIS TRANSACTION ONLY.



Operator: Tap Rock Resources, LLC.  
Well Name: Black Marlin Fed Com #204H  
County: Lea  
State: New Mexico  
Rig Name: H&P 376  
Job Number: 30-025-46976

Intrepid Directional Drilling Specialists certifies that the surveys performed on the above referenced well are true and correct MWD surveys, data provided as follows:

Surveyor: Intrepid Directional Drilling Specialists  
Survey Depths: 176' MD – 21,888' MD  
Projection to Bit: 21,953' MD  
Dates Performed: 08/16/2020 – 09/03/2020  
Type of Survey: MWD

Sincerely,

A handwritten signature in blue ink, appearing to read "Jim", with a stylized flourish at the end.

James Burlison  
Vice President of MWD Operations  
Intrepid Directional Drilling Specialists





# Survey Report

**Service Company:** Intrepid Directional Drilling Specialists

**Location:** Sec-18\_T-25-S\_R-36-E

**Well:** Black Marlin Fed Com #204H

**Rig:** H&P 376

**API or UWI:** 30-025-46976

**Job Number:** ID2649

**State:** New Mexico

**Operating Company:** Tap Rock Resources, LLC.

**County:** Lea

**Magnetic Declination:** 5.91

**Country:** United States

**Proposed Azimuth:** 179.43

**Comment**

**North Reference:** GRID

**Latitude:** 32.000008

**Longitude:** -103.000018

## Tie-In Data

MD	Inclination	Azimuth	TVD	NS	EW
0.00	0.00	0.00	0.00	0.00	0.00

## Survey Data

MD	Inclination	Azimuth	TVD	NS	EW	CA	CD	VS	DLS
176.00	0.70	165.08	176.00	-1.04	0.28	165.08	1.08	1.04	0.40
237.00	0.79	179.49	236.99	-1.82	0.38	168.31	1.86	1.82	0.34
328.00	1.10	186.53	327.98	-3.31	0.28	175.12	3.33	3.32	0.36
421.00	1.41	216.58	420.96	-5.12	-0.50	185.58	5.14	5.12	0.77
513.00	1.54	216.50	512.93	-7.02	-1.91	195.22	7.28	7.00	0.14
605.00	1.93	216.14	604.88	-9.27	-3.56	201.01	9.93	9.23	0.42
700.00	1.10	214.30	699.85	-11.31	-5.02	203.92	12.38	11.26	0.88
794.00	0.44	169.91	793.84	-12.41	-5.46	203.75	13.56	12.36	0.90
889.00	0.75	186.17	888.84	-13.39	-5.47	202.20	14.46	13.34	0.37
984.00	0.75	185.65	983.83	-14.63	-5.59	200.92	15.66	14.57	0.01
1079.00	0.84	192.59	1078.82	-15.93	-5.81	200.03	16.95	15.87	0.14
1173.00	0.66	220.98	1172.81	-17.01	-6.31	200.36	18.14	16.94	0.43
1268.00	1.10	242.60	1267.80	-17.84	-7.48	202.75	19.34	17.77	0.57
1306.00	1.32	237.06	1305.79	-18.25	-8.17	204.12	19.99	18.16	0.66
1438.00	0.92	209.38	1437.77	-20.00	-9.97	206.49	22.34	19.90	0.50
1533.00	0.84	151.37	1532.76	-21.27	-10.01	205.19	23.51	21.17	0.90

MD	Inclination	Azimuth	TVD	NS	EW	CA	CD	VS	DLS
1629.00	0.35	92.31	1628.75	-21.90	-9.38	203.18	23.82	21.81	0.76
1724.00	0.26	38.08	1723.75	-21.74	-8.95	202.38	23.52	21.65	0.30
1819.00	0.13	49.94	1818.75	-21.50	-8.74	202.12	23.21	21.42	0.14
1914.00	0.31	70.51	1913.75	-21.35	-8.41	201.51	22.95	21.26	0.20
2009.00	0.13	39.84	2008.75	-21.18	-8.10	200.93	22.68	21.10	0.22
2105.00	0.35	12.85	2104.75	-20.81	-7.97	200.95	22.28	20.73	0.25
2199.00	0.26	3.54	2198.75	-20.32	-7.89	201.22	21.80	20.24	0.11
2294.00	0.44	16.46	2293.75	-19.75	-7.77	201.48	21.23	19.68	0.21
2388.00	0.57	46.78	2387.74	-19.09	-7.33	201.01	20.45	19.01	0.31
2483.00	0.75	44.67	2482.74	-18.32	-6.55	199.67	19.46	18.26	0.19
2578.00	1.67	43.18	2577.71	-16.87	-5.17	197.02	17.64	16.82	0.97
2672.00	2.42	53.72	2671.65	-14.70	-2.63	190.14	14.93	14.67	0.89
2766.00	3.96	64.80	2765.51	-12.14	1.91	171.06	12.29	12.16	1.76
2860.00	5.27	74.64	2859.20	-9.61	9.01	136.86	13.18	9.70	1.62
2955.00	6.33	73.32	2953.71	-6.96	18.23	110.88	19.51	7.14	1.12
3050.00	7.21	72.79	3048.05	-3.69	28.94	97.26	29.18	3.98	0.93
3144.00	7.03	75.34	3141.32	-0.49	40.14	90.70	40.15	0.89	0.39
3239.00	6.55	78.07	3235.66	2.10	51.07	87.64	51.11	-1.60	0.61
3333.00	6.07	80.53	3329.09	4.03	61.22	86.23	61.35	-3.42	0.59
3428.00	5.80	79.91	3423.58	5.70	70.90	85.41	71.13	-4.99	0.29
3523.00	6.11	79.83	3518.07	7.43	80.60	84.73	80.94	-6.63	0.33
3618.00	6.55	82.99	3612.49	8.98	90.95	84.36	91.40	-8.08	0.59
3712.00	6.46	87.21	3705.88	9.90	101.56	84.43	102.04	-8.89	0.52
3806.00	6.29	85.54	3799.30	10.55	111.97	84.62	112.47	-9.44	0.27
3901.00	6.29	83.61	3893.73	11.54	122.33	84.61	122.88	-10.32	0.22
3996.00	7.03	82.29	3988.09	12.90	133.27	84.47	133.89	-11.57	0.80
4090.00	7.03	82.37	4081.38	14.43	144.67	84.30	145.39	-12.99	0.01
4184.00	7.56	79.65	4174.62	16.31	156.45	84.05	157.30	-14.75	0.67
4279.00	8.04	77.01	4268.74	18.92	169.07	83.61	170.13	-17.24	0.63
4373.00	7.65	76.75	4361.86	21.84	181.57	83.14	182.88	-20.03	0.42
4469.00	7.03	76.75	4457.07	24.65	193.51	82.74	195.07	-22.72	0.65
4564.00	7.08	76.49	4551.36	27.35	204.86	82.40	206.68	-25.31	0.06
4659.00	6.99	75.08	4645.64	30.20	216.14	82.05	218.24	-28.05	0.20
4754.00	7.03	76.05	4739.93	33.09	227.36	81.72	229.76	-30.83	0.13
4850.00	6.90	75.52	4835.22	35.95	238.65	81.43	241.34	-33.57	0.15
4945.00	6.77	74.99	4929.55	38.83	249.58	81.16	252.59	-36.34	0.15
5040.00	6.81	76.13	5023.88	41.63	260.46	80.92	263.77	-39.03	0.15

MD	Inclination	Azimuth	TVD	NS	EW	CA	CD	VS	DLS
5135.00	6.64	75.96	5118.23	44.31	271.26	80.72	274.85	-41.61	0.18
5230.00	6.42	76.40	5212.61	46.89	281.75	80.55	285.62	-44.09	0.24
5262.00	6.29	74.99	5244.41	47.77	285.18	80.49	289.15	-44.93	0.63
5413.00	5.63	76.49	5394.60	51.64	300.37	80.25	304.78	-48.65	0.45
5509.00	5.93	76.57	5490.11	53.89	309.77	80.13	314.43	-50.81	0.31
5604.00	6.99	73.15	5584.50	56.71	320.08	79.95	325.06	-53.52	1.19
5698.00	7.30	72.88	5677.77	60.12	331.26	79.71	336.67	-56.82	0.33
5793.00	6.64	72.97	5772.07	63.51	342.28	79.49	348.12	-60.10	0.69
5887.00	6.77	73.59	5865.43	66.67	352.79	79.30	359.03	-63.15	0.16
5983.00	7.08	75.96	5960.73	69.70	363.96	79.16	370.57	-66.07	0.44
6078.00	6.59	74.73	6055.05	72.55	374.90	79.05	381.85	-68.82	0.54
6173.00	7.08	75.08	6149.38	75.50	385.81	78.93	393.13	-71.66	0.52
6268.00	8.09	71.56	6243.55	79.12	397.81	78.75	405.60	-75.16	1.17
6362.00	8.09	71.04	6336.61	83.36	410.34	78.52	418.72	-79.27	0.08
6456.00	7.74	70.16	6429.71	87.66	422.55	78.28	431.55	-83.45	0.39
6551.00	7.25	71.30	6523.90	91.75	434.25	78.07	443.83	-87.43	0.54
6645.00	6.73	71.39	6617.20	95.41	445.09	77.90	455.20	-90.98	0.55
6740.00	6.86	70.77	6711.54	99.06	455.72	77.74	466.36	-94.52	0.16
6834.00	6.90	76.66	6804.86	102.21	466.51	77.64	477.58	-97.56	0.75
6929.00	6.42	73.32	6899.22	105.05	477.15	77.58	488.58	-100.30	0.65
7023.00	6.77	79.83	6992.60	107.54	487.64	77.56	499.36	-102.68	0.88
7118.00	6.37	82.99	7086.98	109.17	498.38	77.64	510.20	-104.20	0.57
7211.00	6.68	83.17	7179.37	110.44	508.88	77.76	520.72	-105.37	0.33
7305.00	6.64	83.87	7272.74	111.67	519.71	77.87	531.57	-106.50	0.10
7399.00	6.95	86.15	7366.08	112.63	530.79	78.02	542.60	-107.35	0.44
7494.00	6.99	88.70	7460.38	113.15	542.30	78.21	553.98	-107.75	0.33
7588.00	6.33	90.72	7553.74	113.22	553.20	78.43	564.67	-107.71	0.74
7682.00	5.23	92.57	7647.26	112.96	562.66	78.65	573.89	-107.35	1.19
7773.00	5.45	84.57	7737.87	113.18	571.11	78.79	582.21	-107.49	0.85
7867.00	5.67	77.10	7831.43	114.64	580.08	78.82	591.30	-108.86	0.80
7962.00	3.96	74.03	7926.09	116.59	587.81	78.78	599.26	-110.74	1.82
8056.00	3.82	74.99	8019.87	118.29	593.95	78.74	605.62	-112.38	0.16
8152.00	3.21	74.82	8115.69	119.83	599.63	78.70	611.49	-113.86	0.64
8244.00	2.64	68.66	8207.57	121.27	604.09	78.65	616.15	-115.26	0.71
8339.00	2.81	74.90	8302.46	122.67	608.38	78.60	620.62	-116.62	0.36
8433.00	1.01	90.20	8396.41	123.27	611.43	78.60	623.73	-117.18	1.97
8527.00	1.85	99.51	8490.38	123.02	613.76	78.67	625.96	-116.91	0.92

MD	Inclination	Azimuth	TVD	NS	EW	CA	CD	VS	DLS
8620.00	1.93	93.80	8583.33	122.67	616.80	78.75	628.88	-116.52	0.22
8715.00	1.67	78.42	8678.28	122.84	619.75	78.79	631.81	-116.67	0.57
8809.00	1.93	95.21	8772.24	122.97	622.67	78.83	634.70	-116.77	0.62
8903.00	1.14	135.29	8866.20	122.16	624.90	78.94	636.73	-115.94	1.37
8997.00	1.10	129.31	8960.19	120.93	626.26	79.07	637.83	-114.69	0.13
9090.00	0.97	121.75	9053.17	119.95	627.62	79.18	638.98	-113.70	0.20
9185.00	0.92	116.92	9148.16	119.18	628.98	79.27	640.18	-112.91	0.10
9279.00	0.79	125.53	9242.15	118.46	630.19	79.35	641.22	-112.18	0.19
9374.00	0.88	321.44	9337.14	118.65	630.26	79.34	641.33	-112.37	1.74
9469.00	1.41	297.97	9432.12	119.77	628.78	79.22	640.08	-113.51	0.73
9563.00	1.01	298.15	9526.10	120.70	627.02	79.10	638.54	-114.46	0.43
9657.00	0.88	302.72	9620.09	121.48	625.69	79.01	637.37	-115.25	0.16
9752.00	1.05	302.98	9715.08	122.35	624.34	78.91	636.22	-116.13	0.18
9847.00	1.01	298.15	9810.06	123.22	622.87	78.81	634.95	-117.02	0.10
9941.00	0.44	270.20	9904.05	123.61	621.78	78.76	633.95	-117.42	0.70
10036.00	0.57	260.97	9999.05	123.54	620.95	78.75	633.12	-117.35	0.16
10130.00	0.44	252.53	10093.05	123.36	620.15	78.75	632.30	-117.18	0.16
10225.00	0.09	109.09	10188.05	123.22	619.87	78.76	632.00	-117.05	0.54
10319.00	0.79	102.68	10282.04	123.06	620.57	78.78	632.65	-116.88	0.75
10413.00	1.63	120.96	10376.02	122.23	622.35	78.89	634.24	-116.03	0.97
10507.00	0.62	94.68	10470.00	121.50	624.00	78.98	635.72	-115.28	1.18
10601.00	0.44	80.09	10564.00	121.52	624.86	79.00	636.57	-115.29	0.24
10695.00	0.44	49.15	10658.00	121.82	625.49	78.98	637.24	-115.59	0.25
10789.00	1.14	264.92	10751.99	121.97	624.83	78.95	636.63	-115.75	1.62
10883.00	0.75	257.63	10845.98	121.75	623.30	78.95	635.08	-115.55	0.43
10977.00	1.05	215.35	10939.97	120.92	622.20	79.00	633.84	-114.72	0.75
11005.00	1.01	216.23	10967.96	120.51	621.91	79.03	633.48	-114.32	0.15
11101.00	1.19	262.20	11063.95	119.69	620.42	79.08	631.86	-113.52	0.91
11195.00	3.65	171.32	11157.88	116.60	619.91	79.35	630.78	-110.43	4.10
11289.00	10.81	167.54	11251.07	105.02	622.26	80.42	631.06	-98.83	7.63
11383.00	21.45	165.43	11341.24	79.71	628.51	82.77	633.54	-73.45	11.33
11478.00	32.70	164.03	11425.69	38.09	639.97	86.59	641.10	-31.72	11.86
11573.00	39.34	166.40	11502.49	-15.91	654.13	91.39	654.32	22.42	7.14
11668.00	53.67	177.12	11567.81	-83.85	663.19	97.21	668.47	90.45	17.12
11764.00	64.18	181.87	11617.31	-165.92	663.73	104.04	684.15	172.52	11.73
11858.00	72.84	179.93	11651.72	-253.29	662.40	110.93	709.18	259.87	9.41
11955.00	85.41	180.37	11669.98	-348.36	662.14	117.75	748.19	354.93	12.97

MD	Inclination	Azimuth	TVD	NS	EW	CA	CD	VS	DLS
12049.00	87.82	180.99	11675.53	-442.18	661.03	123.78	795.29	448.73	2.65
12143.00	88.53	179.93	11678.52	-536.13	660.28	129.08	850.53	542.67	1.36
12238.00	89.05	179.76	11680.53	-631.10	660.53	133.69	913.56	637.64	0.58
12332.00	89.93	180.72	11681.37	-725.10	660.14	137.68	980.59	731.63	1.39
12425.00	91.69	180.81	11680.05	-818.08	658.90	141.15	1050.43	824.59	1.89
12519.00	92.35	181.08	11676.74	-912.00	657.35	144.22	1124.21	918.50	0.76
12613.00	92.18	181.69	11673.02	-1005.90	655.08	146.93	1200.40	1012.37	0.67
12707.00	93.01	182.48	11668.77	-1099.74	651.66	149.35	1278.32	1106.17	1.22
12801.00	90.68	181.87	11665.74	-1193.62	648.10	151.50	1358.22	1200.01	2.56
12895.00	90.55	182.04	11664.73	-1287.56	644.89	153.40	1440.03	1293.91	0.23
12989.00	87.96	182.39	11665.95	-1381.47	641.26	155.10	1523.05	1387.78	2.78
13084.00	87.30	182.31	11669.88	-1476.31	637.37	156.65	1608.02	1482.58	0.70
13178.00	89.23	182.22	11672.73	-1570.19	633.65	158.02	1693.23	1576.42	2.06
13273.00	91.47	185.65	11672.15	-1664.95	627.13	159.36	1779.14	1671.10	4.31
13366.00	90.73	186.00	11670.36	-1757.45	617.70	160.63	1862.84	1763.51	0.88
13460.00	88.75	182.66	11670.79	-1851.16	610.60	161.74	1949.26	1857.14	4.13
13554.00	88.84	180.29	11672.77	-1945.10	608.18	162.64	2037.97	1951.06	2.52
13648.00	88.62	178.97	11674.85	-2039.07	608.79	163.38	2128.02	2045.03	1.42
13742.00	88.92	178.18	11676.87	-2133.02	611.13	164.01	2218.84	2139.00	0.90
13835.00	92.62	176.77	11675.62	-2225.91	615.22	164.55	2309.36	2231.92	4.26
13929.00	92.79	176.95	11671.18	-2319.66	620.37	165.03	2401.18	2325.72	0.26
14024.00	91.87	176.24	11667.32	-2414.41	626.00	165.46	2494.25	2420.52	1.22
14118.00	92.79	177.12	11663.50	-2508.17	631.44	165.87	2586.44	2514.33	1.35
14212.00	93.05	177.65	11658.71	-2601.95	635.73	166.27	2678.49	2608.15	0.63
14307.00	90.55	178.44	11655.73	-2696.84	638.96	166.67	2771.51	2703.07	2.76
14401.00	91.65	180.55	11653.92	-2790.82	639.79	167.09	2863.21	2797.04	2.53
14495.00	90.46	181.95	11652.19	-2884.77	637.74	167.53	2954.43	2890.98	1.95
14588.00	89.85	181.87	11651.94	-2977.72	634.64	167.97	3044.60	2983.89	0.66
14682.00	88.48	181.69	11653.31	-3071.66	631.72	168.38	3135.95	3077.80	1.47
14776.00	90.11	179.05	11654.47	-3165.64	631.12	168.73	3227.94	3171.77	3.30
14870.00	92.70	177.91	11652.16	-3259.57	633.61	169.00	3320.58	3265.71	3.01
14965.00	91.78	176.42	11648.45	-3354.38	638.30	169.23	3414.57	3360.56	1.84
15059.00	90.95	176.33	11646.21	-3448.16	644.25	169.42	3507.83	3454.40	0.89
15153.00	90.81	175.36	11644.76	-3541.91	651.06	169.58	3601.24	3548.21	1.04
15247.00	90.81	177.30	11643.44	-3635.70	657.07	169.76	3694.60	3642.06	2.06
15342.00	90.02	176.15	11642.75	-3730.54	662.50	169.93	3788.91	3736.94	1.47
15435.00	91.96	178.09	11641.14	-3823.40	667.17	170.10	3881.17	3829.85	2.95



MD	Inclination	Azimuth	TVD	NS	EW	CA	CD	VS	DLS
15529.00	94.42	179.67	11635.91	-3917.22	669.01	170.31	3973.94	3923.69	3.11
15623.00	94.15	179.67	11628.89	-4010.96	669.55	170.52	4066.46	4017.42	0.29
15741.00	94.90	178.97	11619.58	-4128.58	670.94	170.77	4182.75	4135.05	0.87
15837.00	92.79	179.05	11613.14	-4224.35	672.60	170.95	4277.56	4230.83	2.20
15931.00	90.15	179.23	11610.73	-4318.30	674.01	171.13	4370.58	4324.79	2.82
16025.00	90.33	179.14	11610.33	-4412.29	675.34	171.30	4463.67	4418.79	0.21
16118.00	87.25	178.70	11612.30	-4505.24	677.10	171.45	4555.83	4511.75	3.35
16212.00	87.96	178.53	11616.23	-4599.13	679.37	171.60	4649.03	4605.66	0.78
16307.00	89.80	180.02	11618.08	-4694.09	680.57	171.75	4743.17	4700.63	2.49
16401.00	88.79	178.70	11619.24	-4788.08	681.62	171.90	4836.35	4794.62	1.77
16496.00	89.98	179.67	11620.26	-4883.06	682.97	172.04	4930.59	4889.61	1.62
16590.00	89.80	180.11	11620.44	-4977.06	683.15	172.18	5023.73	4983.61	0.51
16685.00	89.54	179.41	11620.99	-5072.06	683.55	172.32	5117.91	5078.61	0.79
16778.00	91.08	179.93	11620.48	-5165.05	684.08	172.46	5210.16	5171.60	1.75
16873.00	91.16	179.85	11618.63	-5260.03	684.26	172.59	5304.35	5266.58	0.12
16968.00	91.08	180.02	11616.77	-5355.01	684.37	172.72	5398.57	5361.56	0.20
17062.00	90.68	180.20	11615.33	-5449.00	684.19	172.84	5491.79	5455.54	0.47
17156.00	91.30	180.64	11613.70	-5542.99	683.50	172.97	5584.97	5549.51	0.81
17250.00	89.27	178.53	11613.24	-5636.97	684.18	173.08	5678.34	5643.50	3.11
17344.00	89.05	177.74	11614.61	-5730.91	687.24	173.16	5771.97	5737.46	0.87
17439.00	89.32	177.74	11615.96	-5825.83	690.99	173.24	5866.66	5832.41	0.28
17532.00	88.57	177.56	11617.68	-5918.73	694.80	173.30	5959.37	5925.35	0.83
17626.00	90.55	178.35	11618.40	-6012.66	698.16	173.38	6053.06	6019.31	2.27
17721.00	90.11	178.44	11617.85	-6107.63	700.82	173.45	6147.70	6114.30	0.47
17815.00	88.79	178.09	11618.75	-6201.58	703.66	173.53	6241.37	6208.27	1.45
17909.00	88.35	177.82	11621.10	-6295.49	707.02	173.59	6335.06	6302.21	0.55
18004.00	89.10	176.68	11623.21	-6390.35	711.57	173.65	6429.85	6397.11	1.44
18098.00	90.42	177.82	11623.61	-6484.24	716.08	173.70	6523.66	6491.04	1.86
18193.00	92.09	180.29	11621.53	-6579.19	717.65	173.77	6618.22	6586.01	3.14
18287.00	92.00	180.99	11618.17	-6673.13	716.60	173.87	6711.49	6679.92	0.75
18381.00	92.22	180.81	11614.71	-6767.05	715.12	173.97	6804.73	6773.83	0.30
18476.00	92.00	180.02	11611.21	-6861.98	714.44	174.06	6899.07	6868.75	0.86
18569.00	91.78	179.85	11608.15	-6954.93	714.54	174.13	6991.54	6961.70	0.30
18663.00	89.80	178.44	11606.85	-7048.91	715.94	174.20	7085.17	7055.68	2.59
18757.00	90.55	178.97	11606.56	-7142.88	718.07	174.26	7178.88	7149.67	0.98
18851.00	89.89	179.32	11606.20	-7236.87	719.47	174.32	7272.54	7243.67	0.79
18945.00	89.71	180.20	11606.53	-7330.87	719.87	174.39	7366.13	7337.66	0.96

MD	Inclination	Azimuth	TVD	NS	EW	CA	CD	VS	DLS
19039.00	89.45	179.85	11607.22	-7424.86	719.82	174.46	7459.67	7431.66	0.46
19133.00	91.74	181.25	11606.24	-7518.85	718.92	174.54	7553.14	7525.63	2.86
19228.00	90.07	179.58	11604.74	-7613.82	718.23	174.61	7647.63	7620.59	2.49
19323.00	87.82	178.97	11606.49	-7708.79	719.44	174.67	7742.29	7715.57	2.45
19418.00	86.59	178.09	11611.12	-7803.65	721.87	174.71	7836.96	7810.44	1.59
19512.00	86.64	178.44	11616.67	-7897.44	724.71	174.76	7930.62	7904.26	0.38
19606.00	89.71	180.72	11619.67	-7991.37	725.40	174.81	8024.23	7998.19	4.07
19700.00	89.32	181.78	11620.46	-8085.34	723.35	174.89	8117.64	8092.14	1.20
19795.00	89.76	182.39	11621.23	-8180.28	719.89	174.97	8211.89	8187.04	0.79
19889.00	89.36	182.13	11621.95	-8274.20	716.18	175.05	8305.14	8280.92	0.51
19983.00	90.20	182.13	11622.31	-8368.14	712.69	175.13	8398.43	8374.81	0.89
20078.00	86.95	181.52	11624.67	-8463.04	709.67	175.21	8492.75	8469.69	3.48
20173.00	87.38	180.37	11629.37	-8557.91	708.10	175.27	8587.16	8564.53	1.29
20267.00	89.98	179.85	11631.54	-8651.88	707.92	175.32	8680.79	8658.49	2.82
20361.00	92.18	180.37	11629.76	-8745.86	707.74	175.37	8774.45	8752.47	2.40
20455.00	92.31	180.55	11626.08	-8839.78	706.99	175.43	8868.01	8846.38	0.24
20550.00	92.92	180.02	11621.75	-8934.68	706.52	175.48	8962.57	8941.27	0.85
20644.00	91.96	180.37	11617.75	-9028.59	706.20	175.53	9056.17	9035.17	1.09
20739.00	91.25	180.11	11615.08	-9123.56	705.80	175.58	9150.82	9130.13	0.80
20833.00	89.80	179.67	11614.22	-9217.55	705.98	175.62	9244.54	9224.12	1.61
20927.00	88.35	179.93	11615.74	-9311.53	706.31	175.66	9338.28	9318.10	1.57
21021.00	87.56	178.70	11619.10	-9405.46	707.43	175.70	9432.03	9412.04	1.55
21116.00	86.90	177.91	11623.69	-9500.31	710.24	175.72	9526.82	9506.91	1.08
21211.00	86.86	177.38	11628.86	-9595.09	714.13	175.74	9621.63	9601.72	0.56
21306.00	87.91	176.51	11633.19	-9689.85	719.19	175.76	9716.51	9696.53	1.43
21402.00	86.95	175.54	11637.50	-9785.52	725.84	175.76	9812.41	9792.26	1.42
21496.00	90.55	176.77	11639.55	-9879.27	732.14	175.76	9906.36	9886.07	4.05
21592.00	88.88	176.59	11640.02	-9975.11	737.70	175.77	10002.35	9981.95	1.75
21687.00	89.76	176.42	11641.15	-10069.92	743.49	175.78	10097.33	10076.82	0.94
21782.00	91.08	176.33	11640.45	-10164.73	749.50	175.78	10192.32	10171.68	1.39
21877.00	89.49	174.40	11639.98	-10259.41	757.17	175.78	10287.31	10266.43	2.63
21888.00	89.54	174.31	11640.08	-10270.35	758.25	175.78	10298.31	10277.39	0.94

**Projected Survey**

MD	Inclination	Azimuth	TVD	NS	EW	CA	CD	VS	DLS
21953.00	89.54	174.31	11640.60	-10335.03	764.70	175.77	10363.28	10342.13	0.00